



NANTUCKET  
HISTORICAL ASSOCIATION

1800 HOUSE

ART INSPIRED BY NANTUCKET HISTORY

2011  
Course  
Listings

EARLY  
AMERICAN  
ARTS & CRAFTS  
CLASSES

*at the 1800 House*

[www.nha.org/1800house](http://www.nha.org/1800house)

# Welcome!

Fall One-Day Workshops begin in late September; watch for schedule.

## 2011 ONE-DAY WORKSHOPS

MEMBER \$125; NONMEMBER \$175

**One-Day Workshop, Dorset Buttons,  
with Lucy Dillon**

Friday, July 8: 9 A.M.–1 P.M.

MEMBER \$125; NONMEMBER \$175

**One-Day Workshop, Ceramic Transferware,  
with Don Carpenter**

Monday, July 18: 9 A.M.–1 P.M.

MEMBER \$125; NONMEMBER \$175

**One-Day Workshop, Hooked “Flag” Bag,  
with Polly Minick**

Friday, July 22: 9 A.M.–1 P.M.

MEMBER \$125; NONMEMBER \$175

**One-Day Workshop, Collage Paperweights,  
with Mary Lacoursiere**

Friday, July 29: 9 A.M.–1 P.M.

MEMBER \$125; NONMEMBER \$175

**One-Day Workshop, Punch Needle Embroidery,  
with Gussie Beaugrand**

Monday, August 8: 9 A.M.–1 P.M.

MEMBER \$125; NONMEMBER \$175

**One-Day Workshop, “PictureThis!”  
with the 1800 House staff**

Friday, August 12: 9 A.M.–1 P.M.

MEMBER \$125; NONMEMBER \$175

**One-Day Workshop, Advanced Punch Needle  
Embroidery, with Gussie Beaugrand**

Monday, August 15: 9 A.M.–1 P.M.

MEMBER \$125; NONMEMBER \$175

**One-Day Workshop, Min-Valentine Ornament,  
with Elizabeth Braun**

Friday, August 19: 9 A.M.–1 P.M.

MEMBER \$125; NONMEMBER \$175

For additional information: [www.nha.org/1800house](http://www.nha.org/1800house) or call 508 228 7785.



**NANTUCKET**  
HISTORICAL ASSOCIATION

**1800 HOUSE**



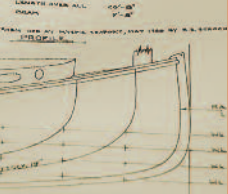
# ARTS



# &

# CRAFTS





20

# 1800 House Arts & Crafts Classes 2011 COURSE LISTINGS



## JUNE & JULY

**"Nantucket Wildflower" Floorcloth, with Mary Lacoursiere**  
Wednesday, June 29, to Friday, July 1: 9 A.M.–1 P.M.  
MEMBER \$300; NONMEMBER \$350

**"Indian" Half-Hull Model, with Mark Sutherland**  
Tuesday, July 5, to Friday, July 8: 9 A.M.–1 P.M.  
MEMBER \$375; NONMEMBER \$425

**Bandboxes, with Fran Phillips**  
Tuesday, July 5 & Wednesday, July 6: 9 A.M.–1 P.M.  
MEMBER \$175; NONMEMBER \$225

**"Nantucket Valentine #2" in Crewel, with Edith Lynch Bouriez**  
Tuesdays, July 5, 12, 19 & 26: 9 A.M.–Noon  
MEMBER \$250; NONMEMBER \$300

**"Sailing Ship" Quilt Block for a Messenger Bag, with Tricia Cevoli**  
Wednesdays, July 6, 13, 20 & 27: 9 A.M.–1 P.M.  
MEMBER \$200; NONMEMBER \$250

**"Fun with Crewel" for the Young Stitcher, with Erica Wilson**  
Wednesdays, July 6, 13, 20 & 27: 9:30–11:30 A.M.  
MEMBER \$250; NONMEMBER \$300

**Historic Bargello Ditty Bag, with Patsy Ernst**  
Thursdays, July 7, 14 & 21: 9 A.M.–Noon  
MEMBER \$225; NONMEMBER \$275

**A Nest of Bandboxes, with Fran Phillips**  
Thursday, July 7 & Friday, July 8: 9 A.M.–1 P.M.  
MEMBER \$175; NONMEMBER \$225

**"Nantucket Holiday Dory" in Needlework, with Ana Ericksen**  
Fridays, July 8, 15 & 22: 9 A.M.–Noon  
MEMBER \$225; NONMEMBER \$275

**One-Day Workshop, Dorset Buttons, with Lucy Dillon**  
Friday, July 8: 9 A.M.–1 P.M.  
MEMBER \$125; NONMEMBER \$175

**Sailors Valentines, with Sandi Blanda**  
Monday, Tuesday & Thursday, July 11, 12 & 14: 9 A.M.–1 P.M.  
MEMBER \$775; NONMEMBER \$825

**Advanced Seashell Shadowbox Workshop, with Sandi Blanda**  
Wednesday, July 13: 9 A.M.–3 P.M.  
MEMBER \$300; NONMEMBER \$350

**Bentwood Willow Chair or Loveseat, with Rick Pratt**  
Tuesday, July 12 & Wednesday, July 13: 9 A.M.–2 P.M.  
MEMBER \$375; NONMEMBER \$425 FOR THE CHAIR  
MEMBER \$475; NONMEMBER \$525 FOR THE LOVESEAT

**"Furniture Rehab" Faux Finishes, with Margi Brenizer**  
Wednesday, July 13, to Friday, July 15: 9 A.M.–1 P.M.  
MEMBER \$175; NONMEMBER \$225

**One-Day Workshop, Ceramic Transferware, with Don Carpentier**  
Monday, July 18: 9 A.M.–1 P.M.  
MEMBER \$125; NONMEMBER \$175

**Sailors Valentines, with Sandy Moran**  
Mondays, July 18 & 25: 9:30 A.M.–3:30 P.M.  
MEMBER \$775; NONMEMBER \$825

**Tin Weather Vanes, with Don Carpentier**  
Tuesday, July 19 & Wednesday, July 20: 9 A.M.–1 P.M.  
MEMBER \$225; NONMEMBER \$275

**"Moby Dick" Hooked Rug, with Polly Minick**  
Wednesday, July 20 & Thursday, July 21: 9 A.M.–1 P.M.  
MEMBER \$450; NONMEMBER \$500

**One-Day Workshop, Hooked "Flag" Bag, with Polly Minick**  
Friday, July 22: 9 A.M.–1 P.M.  
MEMBER \$125; NONMEMBER \$175

**Historic Photo Panel Lampshades, with Deanna Van Schagen**  
Monday, July 25, to Wednesday, July 27: 9 A.M.–1 P.M.  
MEMBER \$225; NONMEMBER \$275

**Folk Art Whirligigs, with Charlie Munro**  
Wednesday, July 27, to Friday, July 29: 9 A.M.–1 P.M.  
MEMBER \$225; NONMEMBER \$275

**Scrimshaw, with Lee Papale**  
Thursday, July 28 & Friday, July 29: 9 A.M.–1 P.M.  
MEMBER \$425; NONMEMBER \$475

**One-Day Workshop, Collage Paperweights, with Mary Lacoursiere**  
Friday, July 29: 9 A.M.–1 P.M.  
MEMBER \$125; NONMEMBER \$175

## AUGUST

**A Nest of Shaker Boxes, with Eric Pintar**  
Monday, August 1 & Tuesday, August 2: 9 A.M.–3 P.M.  
MEMBER \$375; NONMEMBER \$425

**"Nantucket Striper" Advanced Crewel Stitch Sampler, with Edith Lynch Bouriez**  
Tuesdays, August 2, 9, 16 & 23: 9 A.M.–Noon  
MEMBER \$250; NONMEMBER \$300

**Advanced Workshop of Shaker Boxes, with Eric Pintar**  
Wednesday, August 3 & Thursday, August 4: 9 A.M.–3 P.M.  
MEMBER \$375; NONMEMBER \$425

**Silver Viking Chain, with Lessley Burke**  
Wednesday, August 3 & Thursday, August 4: 9 A.M.–Noon  
MEMBER \$175; NONMEMBER \$225

**"Nantucket, Four-Way Bargello" for a Historic Footstool, with Gussie Beaugrand**  
Fridays, August 5, 12, 19 & 26: 9 A.M.–Noon  
MEMBER \$250; NONMEMBER \$300

**One-Day Workshop, Punch Needle Embroidery, with Gussie Beaugrand**  
Monday, August 8: 9 A.M.–1 P.M.  
MEMBER \$125; NONMEMBER \$175



**"Nantucket Town" Mural on a Trunk, with Charlie Munro**  
Tuesday, August 9, to Thursday, August 11: 9 A.M.–1 P.M.  
MEMBER \$425; NONMEMBER \$475

**Smocking a Nantucket Summer Garden Baby Bonnet, with Kitty Benton**  
Tuesday, August 9, to Thursday, August 11: 9 A.M.–1 P.M.  
MEMBER \$175; NONMEMBER \$225

**One-Day Workshop, "Picture This!" with the 1800 House staff**  
Friday, August 12: 9 A.M.–1 P.M.  
MEMBER \$125; NONMEMBER \$175



**One-Day Workshop, Advanced Punch Needle Embroidery, with Gussie Beaugrand**  
Monday, August 15: 9 A.M.–1 P.M.  
MEMBER \$125; NONMEMBER \$175



**Theorem for a Grained Box, with Linda Brubaker**  
Monday, August 15, to Wednesday, August 17: 9 A.M.–1 P.M.  
MEMBER \$225; NONMEMBER \$275

**Bronze Stenciling on a Coffin Tray, with Linda Brubaker**  
Thursday, August 18, and Friday, August 19: 9 A.M.–1 P.M.  
MEMBER \$175; NONMEMBER \$225

**One-Day Workshop, Mini-Valentine Ornament, with Elizabeth Braun**  
Friday, August 19: 9 A.M.–1 P.M.  
MEMBER \$125; NONMEMBER \$175



**Build a "Baidarka" with Corey Freedman**  
Saturday, August 20, to Sunday, August 28: 9 A.M.–5 P.M.  
MEMBER \$1750; NONMEMBER \$1800

**Penwork Box, with Mary Lacoursiere**  
Monday, August 22 & Tuesday, August 23: 9 A.M.–1 P.M.  
MEMBER \$175; NONMEMBER \$225

**"Brant Point Clambake" Primitive Painting, with Jan Munro**  
Tuesday, August 23, to Thursday, August 25: 9 A.M.–1 P.M.  
MEMBER \$250; NONMEMBER \$300

**Shell Mirror, with Elizabeth Braun**  
Wednesday, August 24, to Friday, August 26: 9 A.M.–1 P.M.  
MEMBER \$325; NONMEMBER \$375

## SEPTEMBER

**Italic Calligraphy, with Michele Papineau**  
Wednesday, September 7, to Friday, September 9: 9 A.M.–1 P.M.  
MEMBER \$175; NONMEMBER \$225

**Making an Art Journal, with Susan Callan**  
Wednesday, September 7 & Thursday, September 8: 9 A.M.–1 P.M.  
MEMBER \$175; NONMEMBER \$225

**Fabric Lampshades, with Judy Lake**  
Thursday, September 8 & Friday, September 9: 9 A.M.–1 P.M.  
MEMBER \$275; NONMEMBER \$325

**Historic Motif Block Printing on Paper, with Lucy Dillon and Mary Lacoursiere**  
Monday, September 12 & Tuesday, September 13: 9 A.M.–1 P.M.  
MEMBER \$175; NONMEMBER \$225

**Shorebirds Woodcarving, with Bill Sarni**  
Tuesday, September 13, to Friday, September 16: 9 A.M.–1 P.M.  
MEMBER \$275; NONMEMBER \$325

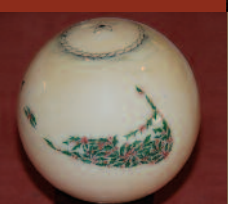
**Sailors Valentines, with Elizabeth Braun**  
Tuesday, September 13, to Thursday, September 15: 9 A.M.–1 P.M.  
MEMBER \$450; NONMEMBER \$500

**Schoolgirl Art on a Hepplewhite Table, with Betsy Kreig Salm**  
Tuesday, September 20, to Thursday, September 22: 9 A.M.–1 P.M.  
MEMBER \$625; NONMEMBER \$675

**Carved and Painted Wooden Game Boards, with Charlie Munro**  
Monday, September 26, to Wednesday, September 28: 9 A.M.–1 P.M.  
MEMBER \$225; NONMEMBER \$275

**"Nantucket Wildflower" Floor Cloth, with Mary Lacoursiere**  
Wednesday, September 28, to Friday, September 30: 9 A.M.–1 P.M.  
MEMBER \$300; NONMEMBER \$350

**Fall One-Day Workshops begin in late September; watch for schedule.**



11



REGISTER EARLY!



New Classes & Instructors!



ONE-DAY WORKSHOPS

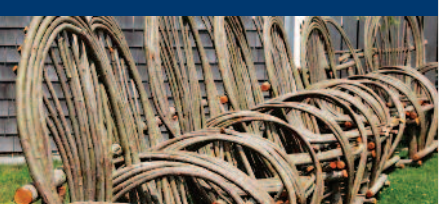


All classes held at the 1800 House, 4 Mill Street

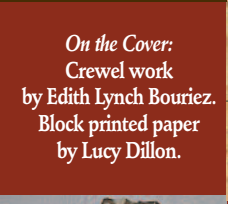
NHA MEMBER DISCOUNTS



CALL 508 228 7785  
WWW.NHA.ORG/1800HOUSE



COURSE FEE INCLUDES MATERIALS



On the Cover: Crewel work by Edith Lynch Bouriez. Block printed paper by Lucy Dillon.



Follow us on facebook

## Registration

- Advance registration is required
- Registration and payment may be made in person at the Nantucket Historical Association, by mail, or by phone, (508) 228-7785
- Payment is due in full at time of registration. Refunds will be given up to two weeks prior to start of class. Credit cards, checks, and cash are accepted.

Complete course catalog & updated class information at [WWW.NHA.ORG/1800HOUSE](http://WWW.NHA.ORG/1800HOUSE)